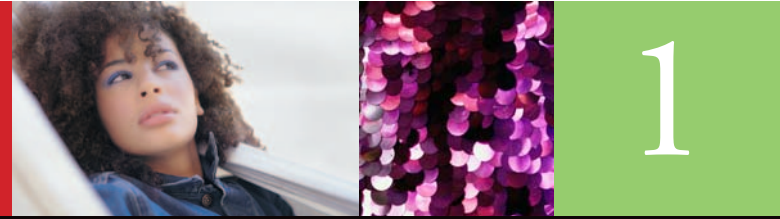


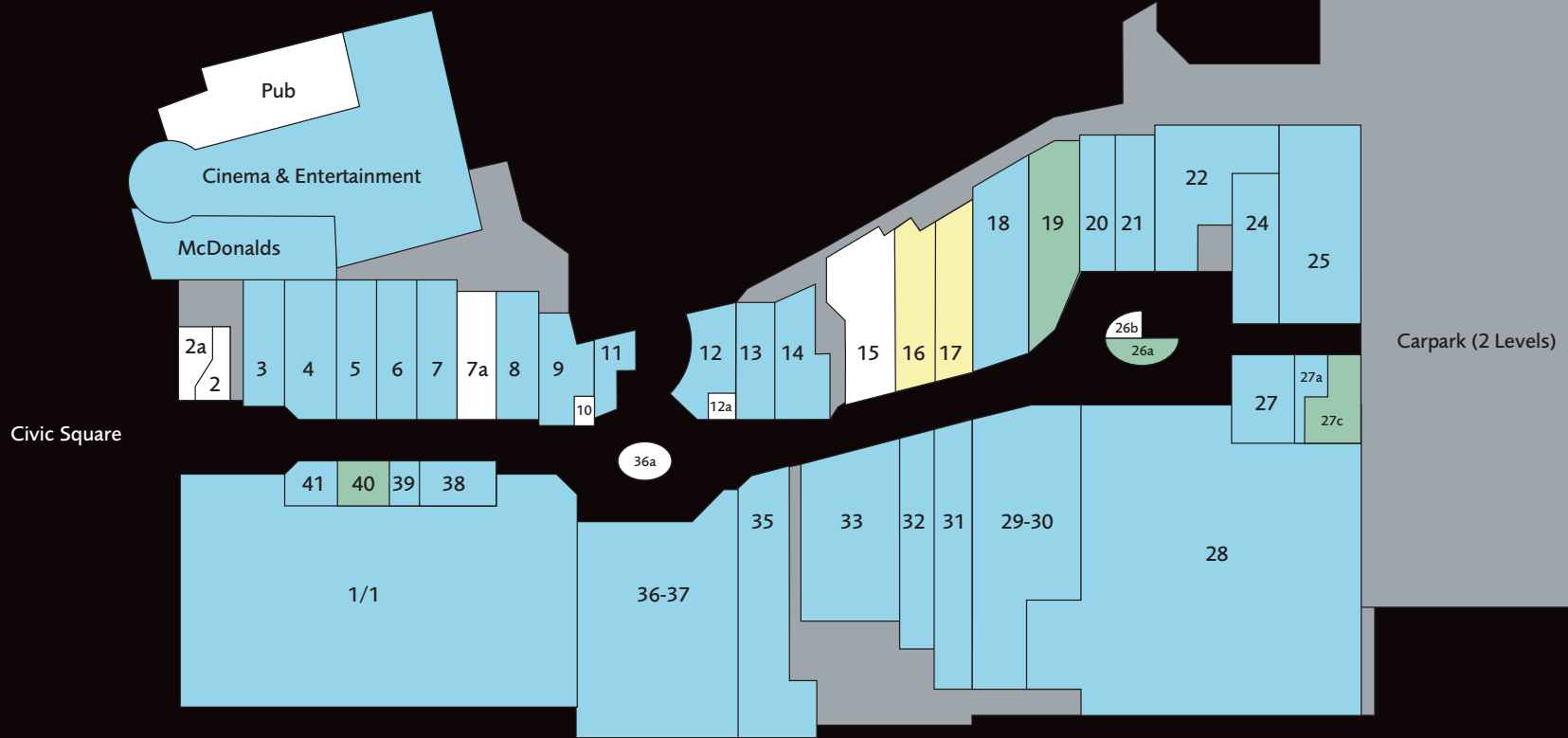
Floor Plans

Level 1

- | | | |
|---------------------------|--------------------------|---------------------------------------|
| 1/1 ■ House of Fraser | 1/14 ■ Monsoon | 1/27a ■ Knights & Ladies Hairdressers |
| 1/2 ■ Fitzpatrick Shoes | 1/15 ■ Reserved | 1/27c ■ Newsagents |
| 1/2a ■ Hobbs | 1/16 ■ Reserved | 1/28 ■ M&S |
| 1/3 ■ Lacoste | 1/17 ■ Clarks | 1/29-30 ■ Zara |
| 1/4 ■ Hugo Boss | 1/18 ■ Massimo Dutti | 1/31 ■ Pamela Scott |
| 1/5 ■ Coast | 1/19 ■ Office | 1/32 ■ Principles |
| 1/6 ■ East | 1/20 ■ La Senza | 1/33 ■ BT2 |
| 1/7 ■ Carl Scarpa | 1/21 ■ Lifestyle Sports | 1/35 ■ River Island |
| 1/7a ■ Butlers Chocolates | 1/22 ■ Card Co. | 1/36-37 ■ Next Kiosk |
| 1/8 ■ Sony Centre | 1/24 ■ Argos | 1/36a ■ Weirs Jewellers |
| 1/9 ■ Bests Menswear | 1/25 ■ Café Rankin Kiosk | 1/38 ■ Molton Brown |
| 1/10 ■ Ernest Jones | 1/26a ■ Ernest Jones | 1/39 ■ Furla |
| 1/11 ■ Ernest Jones | 1/26b ■ Ernest Jones | 1/40 ■ Crabtree & Evelyn |
| 1/12 ■ Ernest Jones | 1/27 ■ Ernest Jones | 1/41 ■ Crabtree & Evelyn |
| 1/12a ■ Ernest Jones | | |
| 1/13 ■ Ernest Jones | | |



Cinema: Movies at Dundrum



- Solicitors Instructed
- Agreement / Lease Signed
- Available to let
- Reserved

Maps and plans are not drawn to scale and are for guidance purposes only.

Floor Plans

Level 2

2

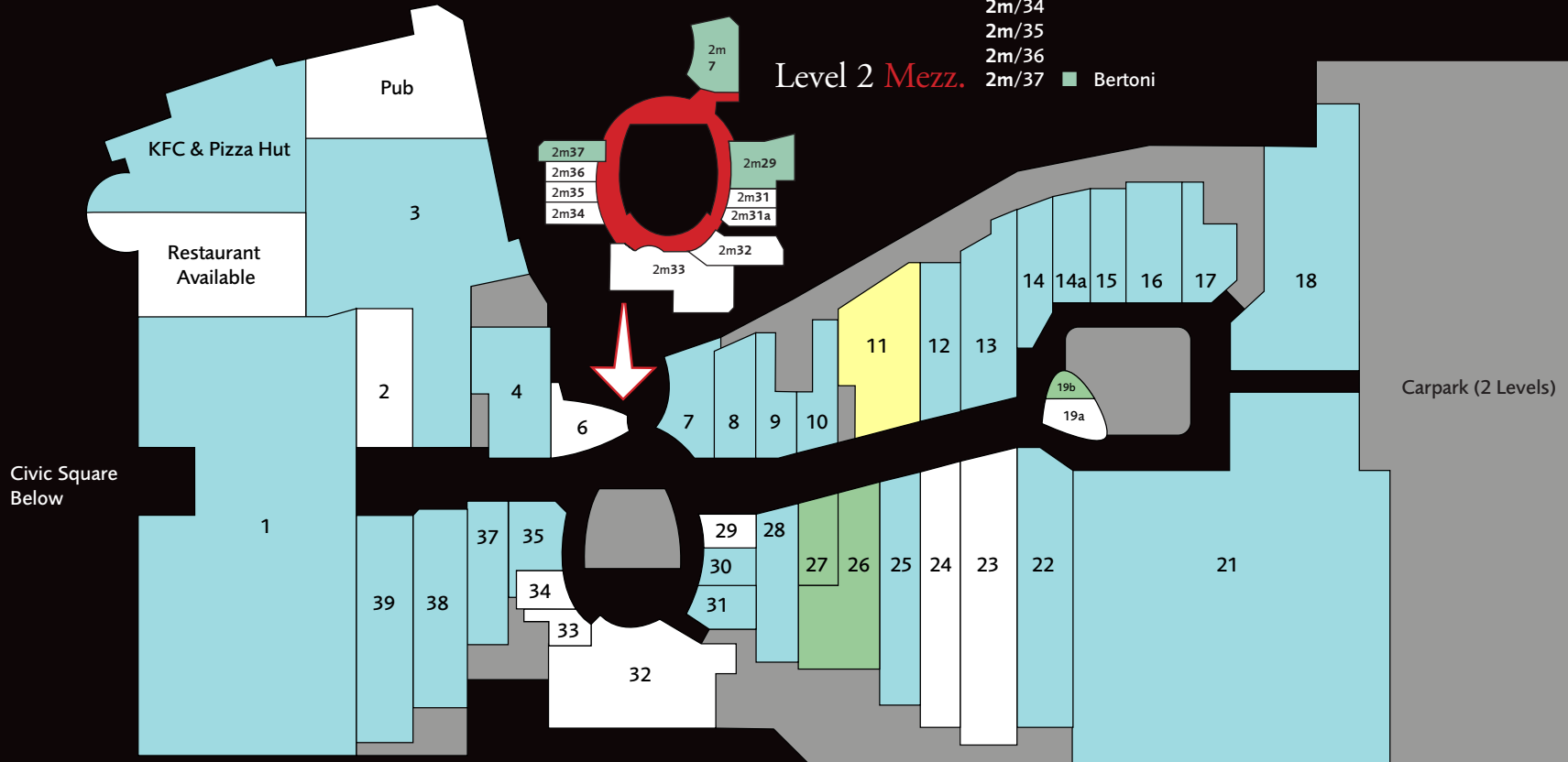


- 2/1 ■ House of Fraser
- 2/2 ■ Virgin Megastore
- 2/3 ■ Tommy Hilfiger
- 2/4 ■ Coffee Shop
- 2/6 ■ Goldsmiths
- 2/7 ■ Timberland
- 2/8 ■ Warehouse
- 2/9 ■ Morgan
- 2/10 ■ Reserved
- 2/11 ■ Oasis
- 2/12 ■ Schuh
- 2/13 ■ Club Denim
- 2/14 ■ Miss Sixty
- 2/14a ■ Jack & Jones
- 2/15 ■ Pull & Bear

- 2/17 ■ d2
- 2/18 ■ Boots
- 2/19a ■ Coffee Shop
- 2/19b ■ Peter Mark
- 2/21 ■ Penneys
- 2/22 ■ A-Wear
- 2/23 ■ Marathon Sports
- 2/24 ■ Esprit
- 2/25 ■ Pepe
- 2/26 ■ Dune
- 2/27
- 2/28
- 2/29

- 2/30 ■ Body Shop
- 2/31 ■ Cassidy Travel
- 2/32
- 2/33
- 2/34
- 2/35 ■ Fields Jewellers
- 2/37 ■ Karen Millen
- 2/38 ■ French Connection
- 2/39 ■ Mango

- 2m/7 ■ Genius
- 2m/29 ■ G-Star
- 2m/31
- 2m/31a
- 2m/32
- 2m/33
- 2m/34
- 2m/35
- 2m/36
- 2m/37 ■ Bertoni



■ Solicitors Instructed ■ Agreement / Lease Signed ■ Available to let ■ Reserved

Maps and plans are not drawn to scale and are for guidance purposes only.

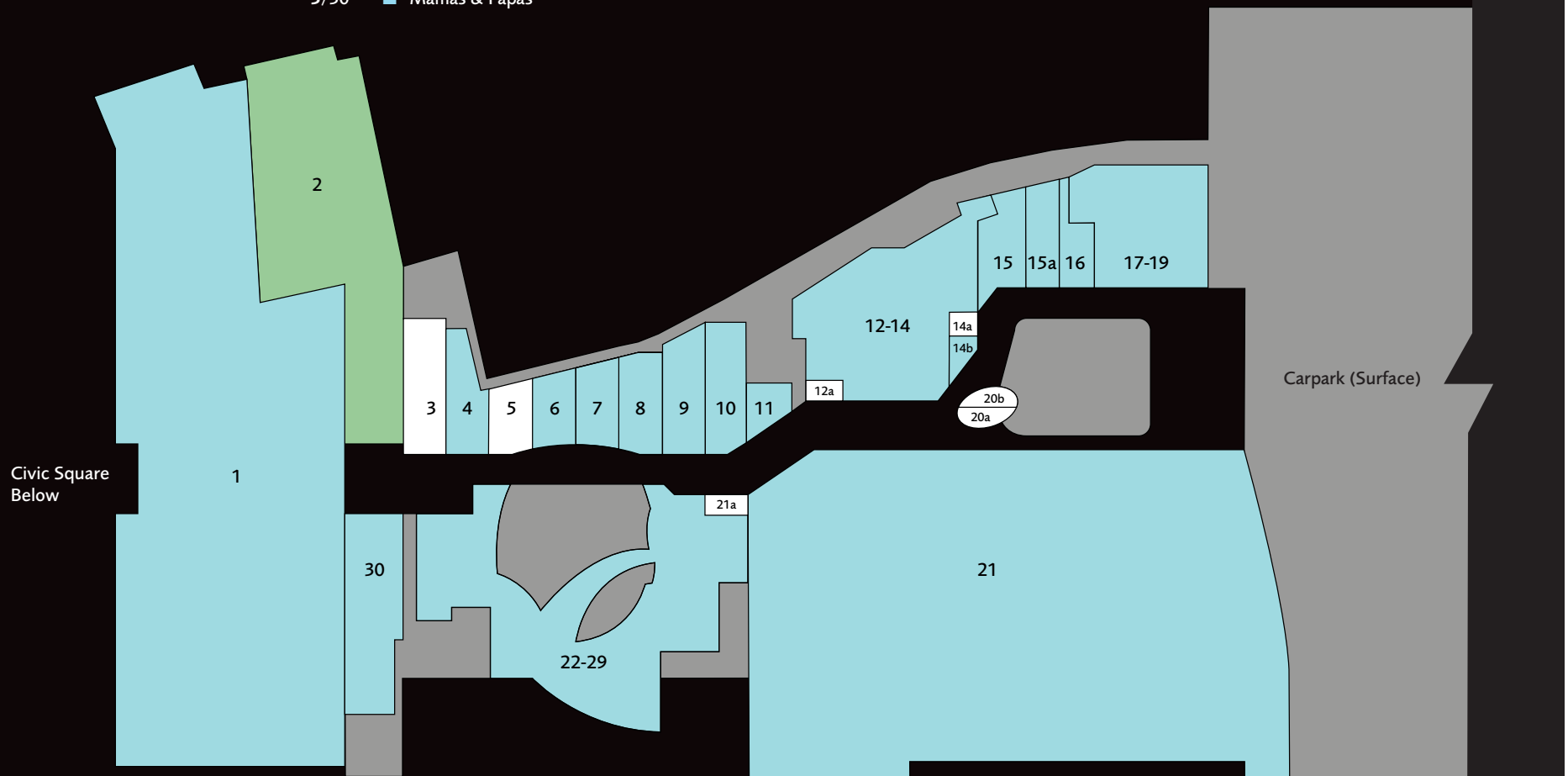
Floor Plans

Level 3

- | | | | |
|-------|-------------------|---------|-----------------------|
| 3/1 | ■ House of Fraser | 3/12-14 | ■ Easons |
| 3/2 | ■ Daisy & Tom | 3/14a | |
| 3/3 | | 3/14b | ■ O2 |
| 3/4 | ■ Ladybird | 3/15 | ■ Vodafone |
| 3/5 | | 3/15a | ■ Health Store |
| 3/6 | ■ Art & Hobby | 3/16 | ■ First Choice Travel |
| 3/7 | ■ 3G | 3/17-19 | ■ McCabes Pharmacy |
| 3/8 | ■ Orchestra | 3/20a | ■ Coffee Shop |
| 3/9 | ■ Specsavers | 3/20b | ■ Kiosk |
| 3/10 | ■ Game | 3/21 | ■ Tesco |
| 3/11 | ■ Herbmedic | 3/21a | |
| 3/12a | | 3/22-29 | ■ Food Emporium |
| | | 3/30 | ■ Mamas & Papas |



3



■ Solicitors Instructed ■ Agreement / Lease Signed ■ Available to let

Maps and plans are not drawn to scale and are for guidance purposes only.